

VSV/VSVI

VSV 250-710

VSVI 311-710



Roof fans

Tourelles

Dachventilatoren

Крышные вентиляторы



Roof fans with vertical discharge are used to extract air from different premises. Motorised impeller is protected with a meshwork grill which offers protection against external objects that could cause mechanical damage to the impeller. Not suitable for polluted air, aggressive and explosive gases.

Plastic impeller with backward curved blades, VSV/VSVI 710 impeller made from steel.

VSVI sound insulation: stone wool, 50 mm thickness.

Motor: external rotor, motor protection built-in thermal contact, maintenance free ball bearings.

Housing: made of galvanized steel. Optionally can be made of aluminium.



Dachventilatoren werden für Abluft aus dem Raum verwendet. Laufrad ist mit Schutzgitter abgedeckt, der es vor Gegenständen schützt, die aus der Umgebung gelangen und das Laufrad mechanisch beschädigen können.

Nicht geeignet für die Beförderung von verschmutzter Luft, aggressiven, explosiven Gasen.

Laufrad ist rückwärts gekrümmt, aus Kunststoff (Größe 710 - Laufrad aus verzinktem Stahl).

VSVI Schalldämmung: Steinwolle, 50mm stark.

Der Motor: Außenrotor, Direktantrieb, Motorschutz durch integriertem Thermokontakt, dauerhafte, keine Pflege erfordernde Lager.

Ziehl-Abbeg motorisiertes Laufrad.

Das Gehäuse aus verzinktem Blech. Auf Anfrage sind ebenso Ausführungen aus Aluminium verfügbar.



Tourelles utilisées pour l'extraction de l'air vicié du local. Turbine recouverte par des grilles la protégeant des objets étrangers pouvant provenir des alentours et endommager la turbine de manière mécanique.

Le produit n'est pas adapté au transport d'air fortement pollué, de gaz agressifs ou explosifs.

Turbine : pales incurvées vers l'arrière, plastique (VSV/VSVI 710 acier galvanisé).

Isolation acoustique en laine de roche : parois de 50 mm.

Moteur : rotor extérieur, entraînement direct, protection moteur intégrée par thermocontact, roulements à longue durée de vie et ne nécessitant pas d'entretien.

Enveloppe : tôle d'acier galvanisée. Si besoin, en aluminium.



Крышные вентиляторы для вытяжки воздуха из помещений. Крыльчатка закрыта сетчатой решёткой, защищающей её от попадающих извне посторонних предметов, способных механически повредить крыльчатку. Не используются при транспортировке загрязнённого воздуха, агрессивных, взрывоопасных газов.

Крыльчатка: загнутые назад лопатки, сделано из пластика.

VSVI звукоизоляция: каменная вата, толщиной 50 мм.

Двигатель: наружный ротор, прямая передача, встроенные термоконтакты двигателя, не требующие ухода подшипники с длительным сроком службы.

Корпус: оцинкованной жести. Может быть изготовлено и из алюминия.

Accessories

Single phase speed controller



TGRV

p. 84

Three phase speed controller



TGRT

p. 85

Monophase speed controller



MTY

p. 87

Roof curb



KS

p. 93

Roof curb



KSP

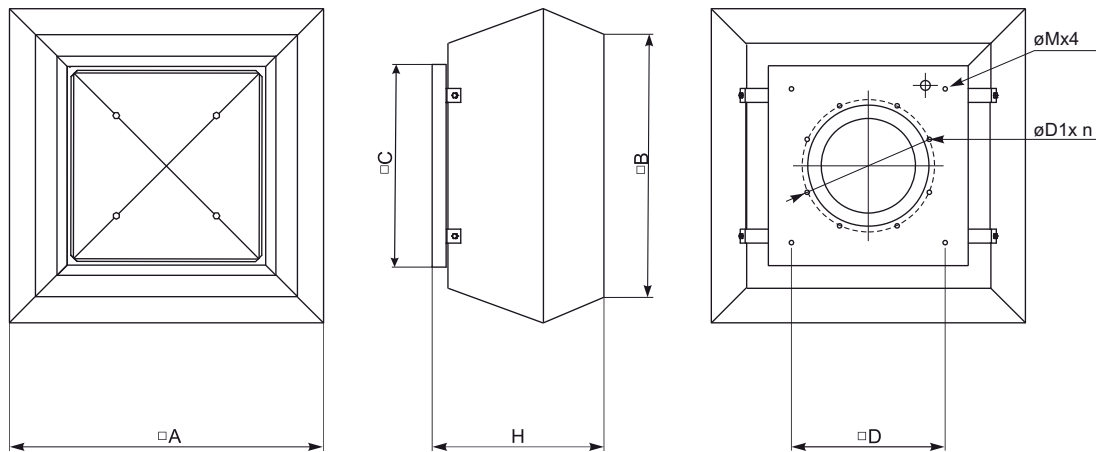
p. 92

Flange-adaptor



FSV

p. 100

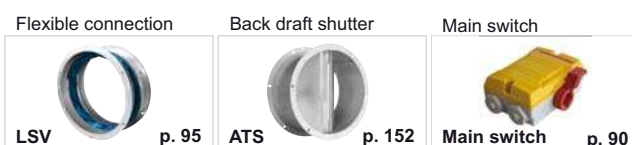


Type	Dimensions [mm]							
	□ A	□ B	□ C	H	øM	□ D	øD1	n
VSV 250	415	320	355	275	M6	245	230	6
VSV 311	555	470	435	323	M6	330	285	6
VSV 355	720	618	595	420	M10	450	438	6
VSV 400	720	618	595	420	M10	450	438	6
VSV 450	900	700	665	485	M10	535	438	6
VSV 500	900	700	665	485	M10	535	438	6
VSV 560	1150	972	939	609	M10	750	605	8
VSV 630	1150	972	939	609	M10	750	605	8
VSV 710	1350	1176	1040	717	M10	840	674	8

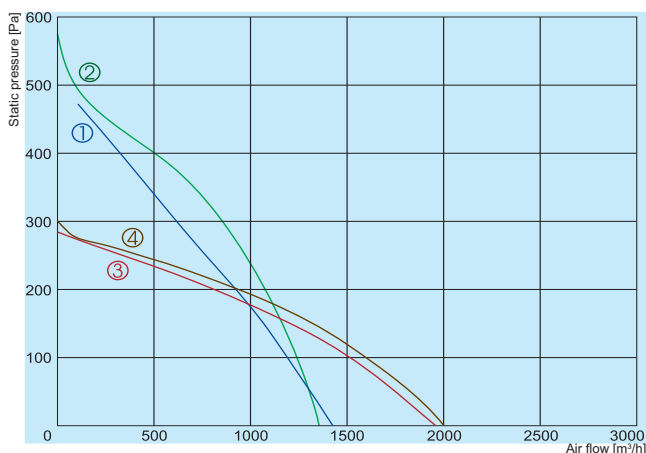
Type	Dimensions [mm]							
	□ A	□ B	□ C	H	øM	□ D	øD1	n
VSVI 311	675	567	435	369	M6	330	285	6
VSVI 355	844	716	595	422	M10	450	438	6
VSVI 400	844	716	595	422	M10	450	438	6
VSVI 450	966	817	665	488	M10	535	438	6
VSVI 500	966	817	665	488	M10	535	438	6
VSVI 560	1265	1033	939	611	M10	750	605	8
VSVI 630	1265	1033	939	611	M10	750	605	8
VSVI 710	1447	1178	1040	747	M10	840	674	8

Type	Accessories									
	TGRV	TGRT	MTY	KS	KSP	FSV	LSV	ATS	Main switch	
VSV 250-2 L1	1,5	-	1,5	250	250	250	250	250	BWS316 Y TPN	
VSV 250-2S L1	1,5	-	1,5	250	250	250	250	250	BWS316 Y TPN	
VSV/VSVI 311-4 L1	1,5	-	1,5	311	311	311	311	311	BWS316 Y TPN	
VSV/VSVI 311-4 L3	-	1	-	311	311	311	311	311	BWS316 Y TPN	
VSV/VSVI 355-4 L1	2	-	2,5	355/400	355/400	355-500	355/500	355/500	BWS316 Y TPN	
VSV/VSVI 355-4 L3	-	1	-	355/400	355/400	355-500	355/500	355/500	BWS316 Y TPN	
VSV/VSVI 400-4 L1	3	-	4	355/400	355/400	355-500	355/500	355/500	BWS316 Y TPN	
VSV/VSVI 400-4 L3	-	1	-	355/400	355/400	355-500	355/500	355/500	BWS316 Y TPN	
VSV/VSVI 450-4 L1	5	-	-	450/500	450/500	355-500	355/500	355/500	BWS316 Y TPN	
VSV/VSVI 450-4 L3	-	2	-	450/500	450/500	355-500	355/500	355/500	BWS316 Y TPN	
VSV/VSVI 450-6 L1	2	-	2,5	450/500	450/500	355-500	355/500	355/500	BWS316 Y TPN	
VSV/VSVI 450-6 L3	-	1	-	450/500	450/500	355-500	355/500	355/500	BWS316 Y TPN	
VSV/VSVI 500-4 L3	-	4	-	450/500	450/500	355-500	355/500	355/500	BWS316 Y TPN	
VSV/VSVI 500-6 L3	-	2	-	450/500	450/500	355-500	355/500	355/500	BWS316 Y TPN	
VSV/VSVI 560-4 L3	-	5	-	560/630	560/630	560-630	560/630	560/630	BWS316 Y TPN	
VSV/VSVI 560-6 L3	-	2	-	560/630	560/630	560-630	560/630	560/630	BWS316 Y TPN	
VSV/VSVI 630-4 L3	-	11	-	560/630	560/630	560-630	560/630	560/630	BWS316 Y TPN	
VSV/VSVI 630-6 L3	-	4	-	560/630	560/630	560-630	560/630	560/630	BWS316 Y TPN	
VSV/VSVI 630-8 L3	-	2	-	560/630	560/630	560-630	560/630	560/630	BWS316 Y TPN	
VSV/VSVI 710-6 L3	-	7	-	710	710	710	710	710	BWS316 Y TPN	
VSV/VSVI 710-8 L3	-	3	-	710	710	710	710	710	BWS316 Y TPN	

Accessories

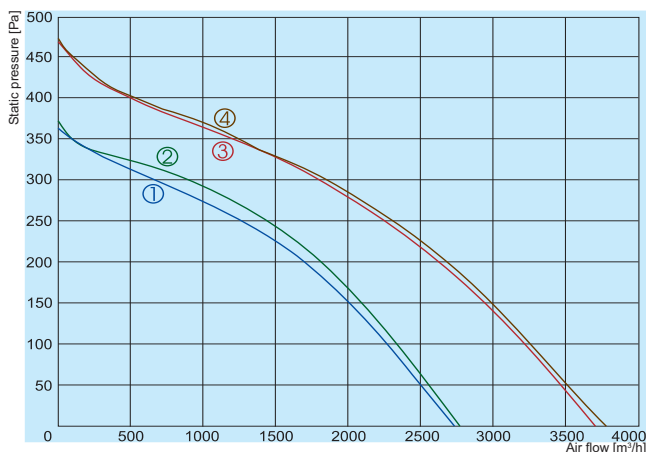


VSV/VSVI



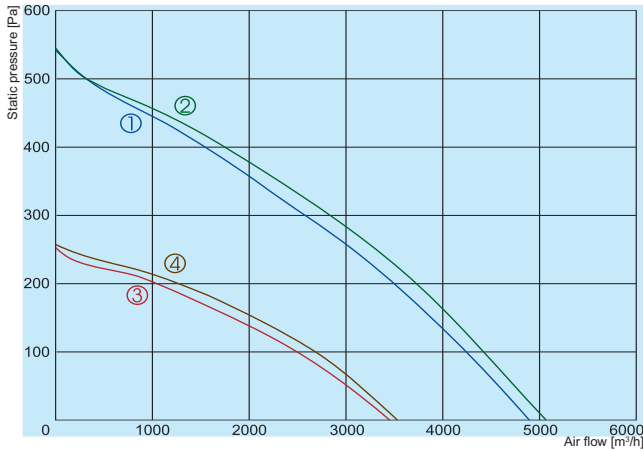
- ① — VSV 250-2 L1
- ② — VSV 250-2S L1
- ③ — VSV/VSVI 311-4 L1
- ④ — VSV/VSVI 311-4 L3

		250-2 L1	250-2S L1	311-4 L1	311-4 L3
Voltage/Frequency	[V/Hz]	230/50	230/50	230/50	400/50
Power consumption	[kW]	0,23	0,185	0,183	0,153
Current	[A]	1,00	0,81	0,83	0,35
Speed	[min ⁻¹]	2631	2650	1310	1370
Max. airflow	[m ³ /h]	1428	1350	1957	2010
Max. air temperature	[°C]	50	50	60	60
Weight	[kg]	8,3	8,1	26	26
Wiring diagram		No. 4	No. 3	No. 1	No. 2
Protection class:	motor	IP-44	IP-44	IP-44	IP-44
	terminal box	IP-54	IP-54	IP-54	IP-54



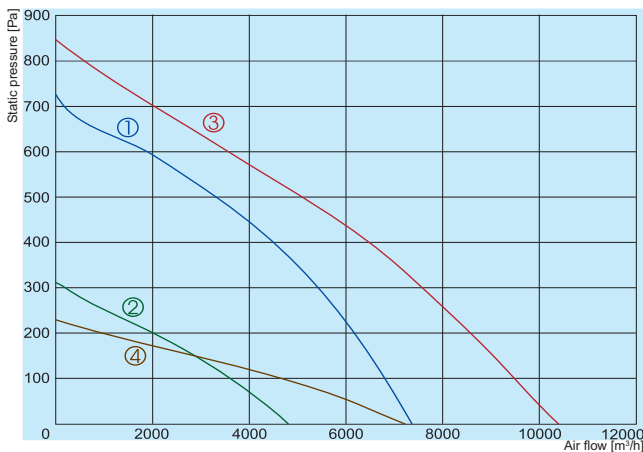
- ① — VSV/VSVI 355-4 L1
- ② — VSV/VSVI 355-4 L3
- ③ — VSV/VSVI 400-4 L1
- ④ — VSV/VSVI 400-4 L3

		355-4 L1	355-4 L3	400-4 L1	400-4 L3
Voltage/Frequency	[V/Hz]	230/50	400/50	230/50	400/50
Power consumption	[kW]	0,270	0,243	0,451	0,436
Current	[A]	1,3	0,48	2,15	0,81
Speed	[min ⁻¹]	1390	1340	1280	1320
Max. airflow	[m ³ /h]	2770	2740	3710	3770
Max. air temperature	[°C]	60	60	60	60
Weight	[kg]	39	38	42	41
Wiring diagram		No. 1	No. 2	No. 1	No. 2
Protection class:	motor	IP-54	IP-54	IP-54	IP-54
	terminal box	IP-54	IP-54	IP-54	IP-54



- ① VSV/VSVI 450-4 L1
- ② VSV/VSVI 450-4 L3
- ③ VSV/VSVI 450-6 L1
- ④ VSV/VSVI 450-6 L3

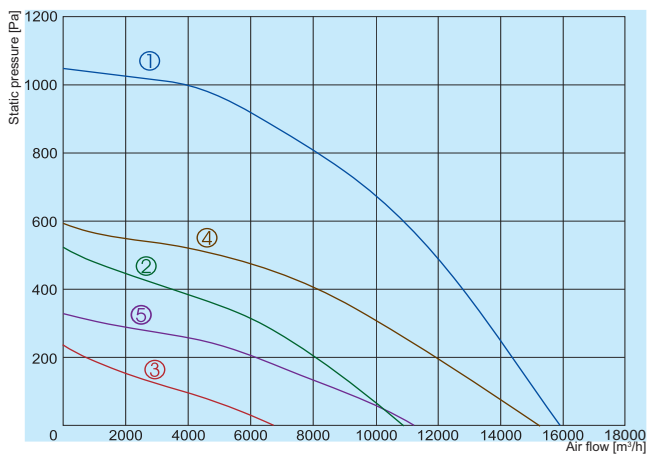
		450-4 L1	450-4 L3	450-6 L1	450-6 L3
Voltage/Frequency	[V/Hz]	230/50	400/50	230/50	400/50
Power consumption	[kW]	0,628	0,652	0,243	0,267
Current	[A]	2,87	1,32	1,06	0,61
Speed	[min ⁻¹]	1230	1250	920	880
Max. airflow	[m ³ /h]	4880	5050	3440	3530
Max. air temperature	[°C]	60	60	60	60
Weight	[kg]	62,5	61	62,5	59,5
Wiring diagram		No. 1	No. 2	No. 1	No. 2
Protection class:	motor	IP-54	IP-54	IP-54	IP-54
	terminal box	IP-54	IP-54	IP-54	IP-54



- ① VSV/VSVI 500-4 L3
- ② VSV/VSVI 500-6 L3
- ③ VSV/VSVI 560-4 L3
- ④ VSV/VSVI 560-6 L3

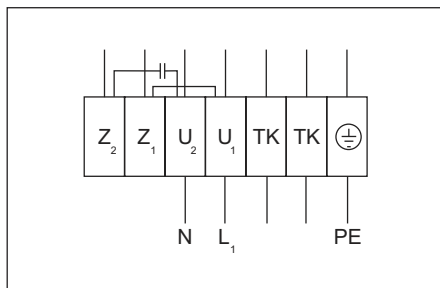
		500-4 L3	500-6 L3	560-4 L3	560-6 L3
Voltage/Frequency	[V/Hz]	400/50	400/50	400/50	400/50
Power consumption	[kW]	1,190	0,388	1,809	0,622
Current	[A]	2,21	0,79	3,38	1,07
Speed	[min ⁻¹]	1330	840	1180	800
Max. airflow	[m ³ /h]	7360	4810	10330	7215
Max. air temperature	[°C]	55	60	50	40
Weight	[kg]	65	59	109	98
Wiring diagram		No. 2	No. 2	No. 2	No. 2
Protection class:	motor	IP-54	IP-54	IP-54	IP-54
	terminal box	IP-54	IP-54	IP-54	IP-54

VSV/VSVI



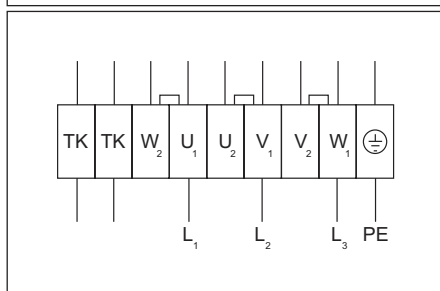
- ① VSV/VSVI 630-4 L3
- ② VSV/VSVI 630-6 L3
- ③ VSV/VSVI 630-8 L3
- ④ VSV/VSVI 710-6 L3
- ⑤ VSV/VSVI 710-8 L3

		630-4 L3	630-6 L3	630-8 L3	710-6 L3	710-8 L3
Voltage/Frequency	[V/Hz]	400/50	400/50	400/50	400/50	400/50
Power consumption	[kW]	4,148	1,225	0,383	2,00	0,99
Current	[A]	7,03	2,6	0,86	3,9	1,93
Speed	[min ⁻¹]	1360	880	520	890	650
Max. airflow	[m ³ /h]	15900	10880	6700	15300	11215
Max. air temperature	[°C]	50	60	60	40	40
Weight	[kg]	140	123,5	117,5	207	198,5
Wiring diagram		No. 2	No. 2	No. 2	No. 2	No. 2
Protection class:	motor	IP-54	IP-54	IP-54	IP-54	IP-54
	terminal box	IP-54	IP-54	IP-54	IP-54	IP-54



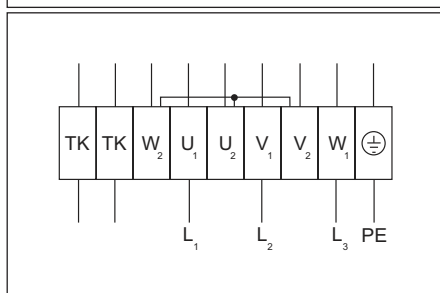
Wiring diagram No. 1 (1~230V)

U₁ - brown
 U₂ - blue
 Z₁ - black
 Z₂ - orange
 TK - white
 PE - yellow-green



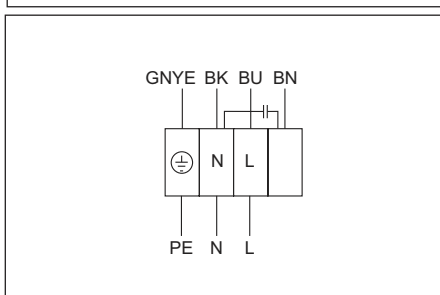
Wiring diagram No. 2 (Δ - 3~230V)

U₁ - brown
 V₁ - blue
 W₁ - black
 U₂ - red
 V₂ - grey
 W₂ - orange
 TK - white
 PE - yellow-green



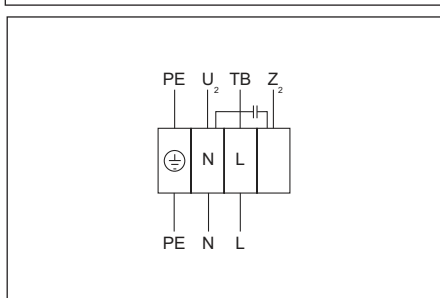
Wiring diagram No. 2 (Y - 3~400V)

U₁ - brown
 V₁ - blue
 W₁ - black
 U₂ - red
 V₂ - grey
 W₂ - orange
 TK - white
 PE - yellow-green



Wiring diagram No. 3 (1~230V)

GNYE - green-yellow
 BK - black
 BU - blue
 BN - brown
 PE - yellow-green



Wiring diagram No. 4 (1~230V)

U₂ - blue or grey
 Z₂ - black
 TB - brown
 PE - yellow-green